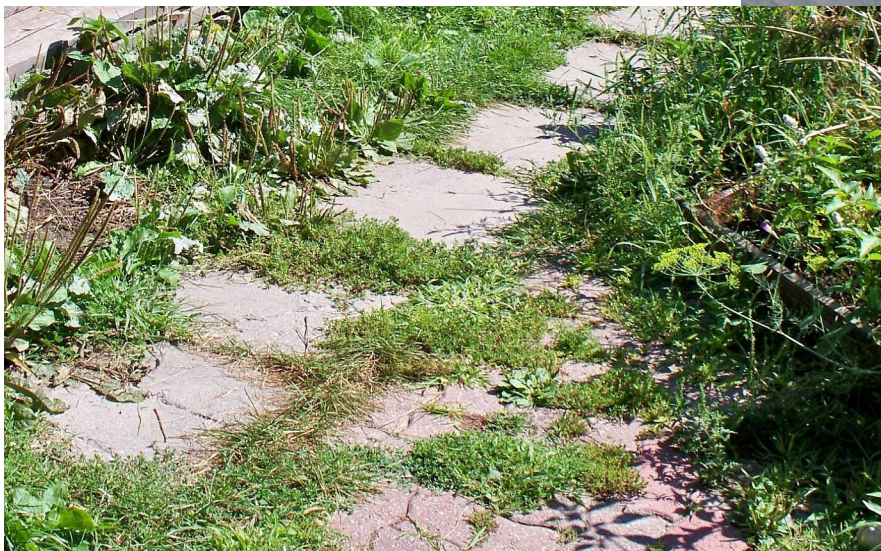


Maintenance Team

This team will be responsible for making sure that the pathways are clear, and removing the grass and weeds that come up between the tiles. They will make sure that the garden shed is kept tidy and the tools in good condition. When ever they arrive in the garden, they will do a circle check of the whole garden and look for garbage, and damage that has been left behind from uninvited visitors.

They will be responsible for maintaining the recycle box and the garbage can. When either are full. They can bring them to the proper container either garbage or recycle, that is located in the park. During our community events they will also oversee the green bin.



When there are large things that need to be removed, they will notify the garden coordinator and she will make arrangements with the park staff for its removal